



TÜRK LOYDU

TECHNICAL CIRCULAR

Circular No: S-P 10/13

Revision: 0

Page: 1 of 2

Date: 22.04.2013

Related Requirement: UI SC224 (Rev.0 Aug 2008), UI LL74 (Rev.0 Aug 2008), UI MPC95 (Rev.0 Aug 2008), UI TM1 (Rev.0 Aug 2008)

Subject: Measurement of Distances and Determination of Moulded Depth (D) for Ships with an Open Mooring Deck Aft or Stepped Upper Deck

As stated in IACS UI SC224 Rev.0 (Aug 2008), UI LL74 Rev.0 (Aug 2008) and UI MPC95 Rev.0 (Aug 2008);

Several IMO instruments (e.g., ICLL, SOLAS and MARPOL Conventions, the IBC Code and the IGC Code, etc.) require distances to be measured such as tank length, height, width, ship (or subdivision or waterline) length, etc..

Interpretation

Unless explicitly stipulated otherwise in the text of the regulations in SOLAS, Load Line and MARPOL Conventions and any of their mandatory Codes, distances are to be measured by using moulded dimensions.

As stated in UI TM1 Rev.0 (Aug 2008)

Regulation 2 (2) (c) of Annex 1

When calculating the net tonnage for ships with an open mooring deck aft, the moulded depth should be measured to the line of the open mooring deck continued forward parallel to the raised part of the upper deck (depth D_1 in Figure 1) and not to the raised part of the upper deck (depth D_2 in Figure 1). If the upper deck is continued aft over the mooring deck, the moulded depth should still be taken as D_1 in Figure 1, provided that the side openings allow the space below the upper deck to be considered as an excluded space according to Regulation 2 (5) (b) and (c).

For ships with a step in the upper deck extending across the full breadth and greater than one metre in length, the moulded depth should be measured to the line of the lower point of the exposed deck extended parallel to the raised part of the exposed deck (depth D_1 in Figure 2) and not to the raised part of the upper deck (depth D_2 in Figure 2).

If the step or mooring deck is situated outside the length as defined in Article 2(8) of the Convention or if the length of the step or mooring deck is one metre or less, the moulded depth should be taken as D_2 in Figures 1 and 2.

TECHNICAL CIRCULAR

Circular No: S-P 10/13

Revision: 0

Page: 2 of 2

Date: 22.04.2013

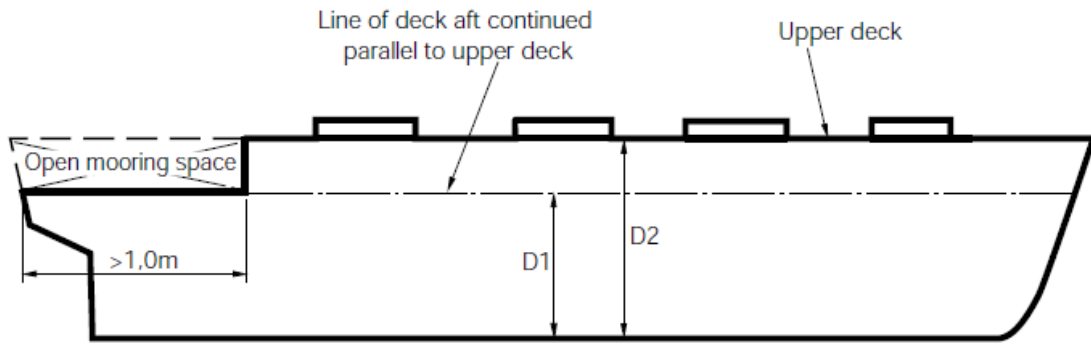


Fig. 1

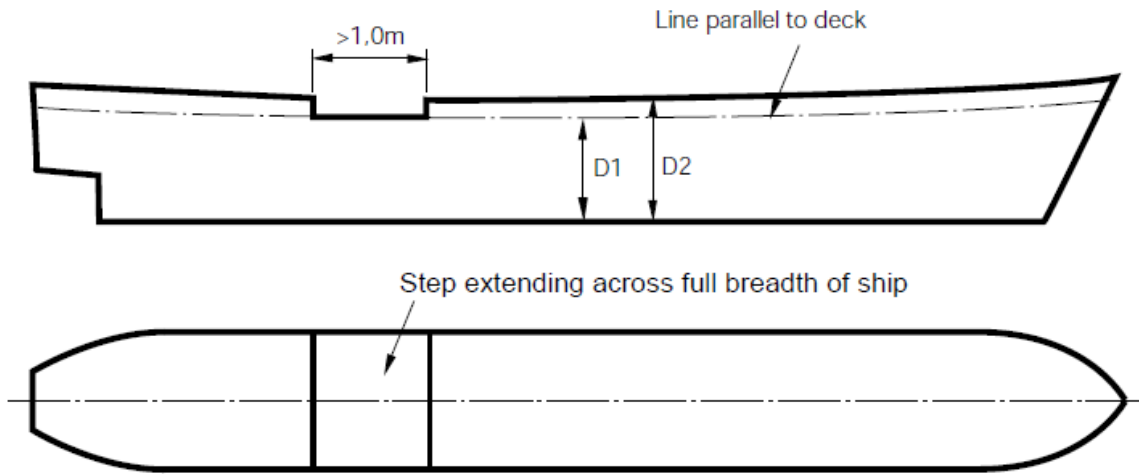


Fig. 2